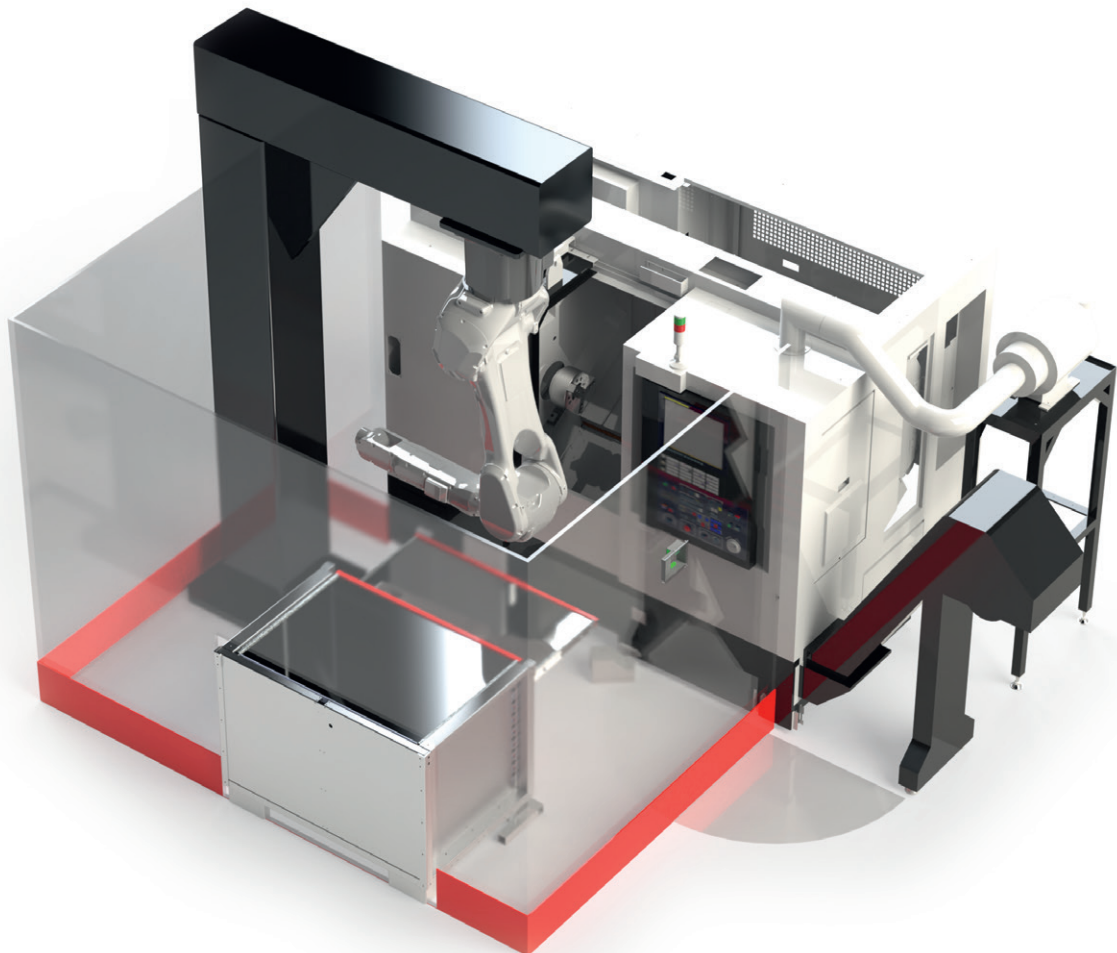


## VBA ECOLINE AUTOMATION CELL TURNING & GRINDING UP TO 16 KG

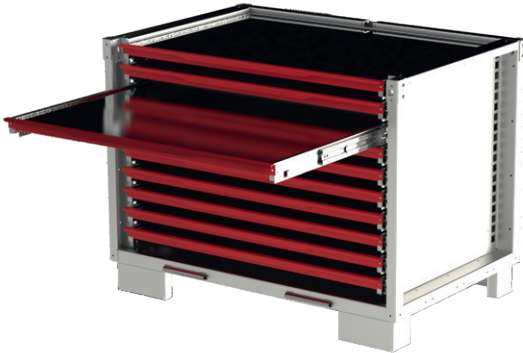
- Best price performance ratio
- Fanuc robot with 25 kg handling weight, boom or base construction
- Easy operation and compact design
- Flexible setup
- Complete package with HAINBUCH clamping devices centroteX and TOPlus AC possible
- Power chuck with automatically changeable clamping heads, production from batch size 1
- With gripper change, clamping heads/workpieces
- Interchangeable FlexiBox for workpieces and clamping heads with 5 or 10 drawers
- Manual or automatic operation possible

**Starting at 88,000 EUR (excl. clamping devices and commissioning)**



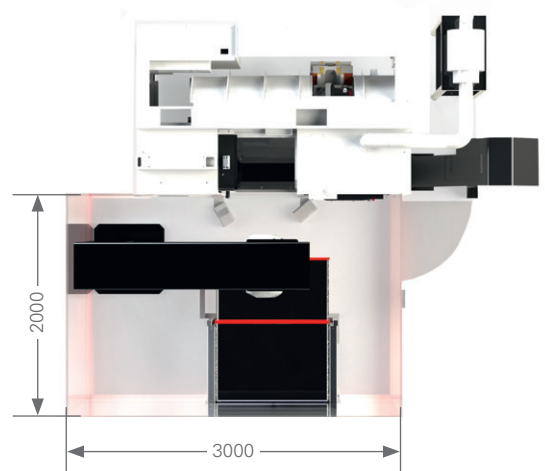
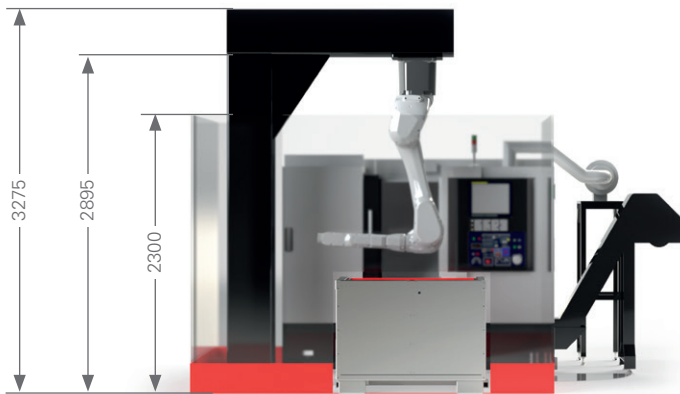
# VBA ECOLINE AUTOMATION CELL TURNING & GRINDING UP TO 16 KG

## FlexiBox

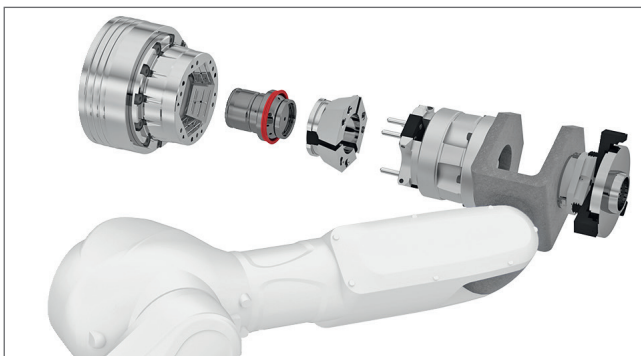


- Dimensions: 1,237 x 831 x 931 mm (LxWxH)
- Usable area per drawer: 600 x 1,000 mm
- Payload per drawer 75 kg or 130 kg if loading instructions are followed
- Transportation with industrial forklifts possible
- Max. component height with 10 drawers: 40 mm
- Max. component height with 5 drawers: 115 mm
- Max. component weight with single gripper: 16 kg
- Max. component weight with double gripper: 8 kg

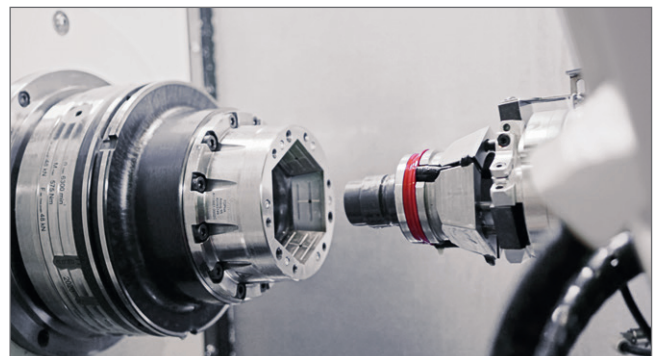
## Specifications



## Clamping solutions



Optional workholding technology: HAINBUCH TOPlus AC power-operated chuck

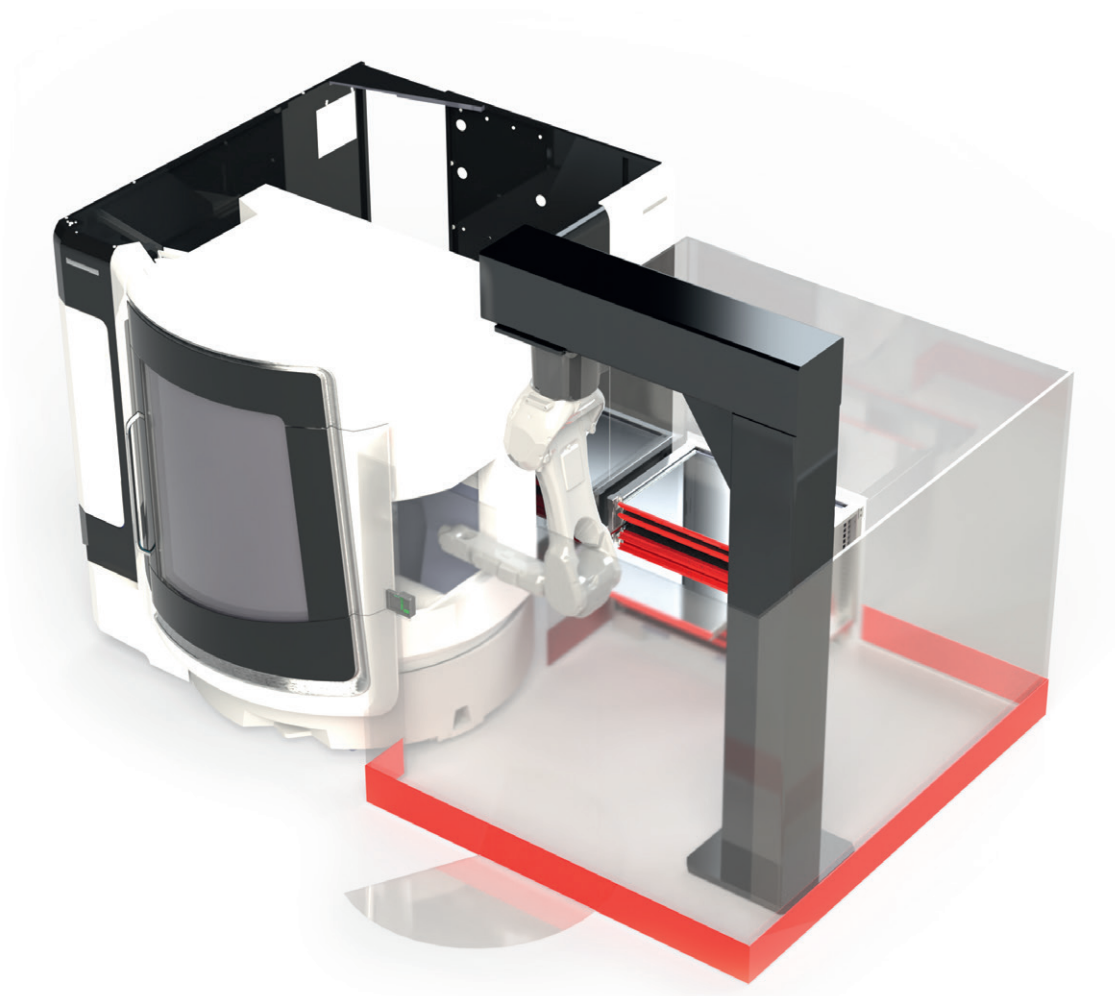


Optional workholding technology: Automated clamping head and workpiece end-stop change-over

## VBA ECOLINE AUTOMATION CELL MILLING UP TO 16 KG

- Best price performance ratio
- Fanuc robot with 25 kg handling weight, boom or base construction
- Easy operation and compact design
- Loading via front or side windows
- No modification of the milling machine necessary for automatic operation
- Complete package with VBA clamping devices, mechanical, pneumatic, or hydraulic possible
- Center vice with automatically changeable click jaws, production from batch size 1
- Interchangeable FlexiBox for workpieces and clamping jaws with 5 or 10 drawers
- Manual or automatic operation possible

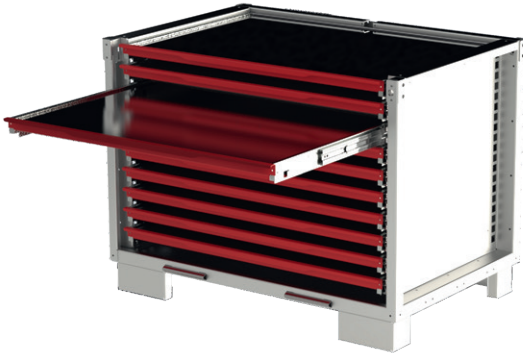
**Starting at 88,000 EUR (excl. clamping devices and commissioning)**



# VBA ECOLINE AUTOMATION CELL

## MILLING UP TO 16 KG

### FlexiBox

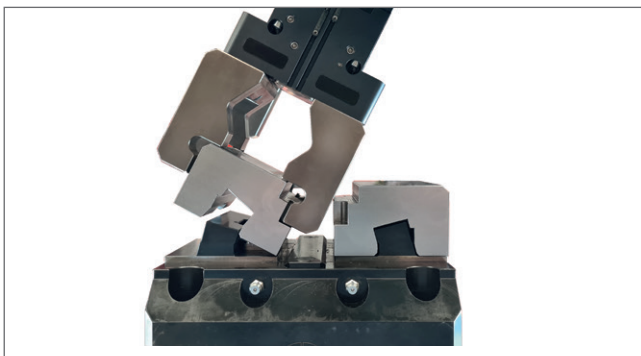


- Dimensions: 1,237 x 831 x 931 mm (LxWxH)
- Usable area per drawer: 600x1,000 mm
- Payload per drawer 75 kg or 130 kg if loading instructions are followed
- Transportation with industrial forklifts possible
- Max. component height with 10 drawers: 40 mm
- Max. component height with 5 drawers: 115 mm
- Max. component weight with single gripper: 16 kg
- Max. component weight with double gripper: 8 kg

### Specifications



### Clamping solutions



Optional workholding technology: Intelligent vice with automatically exchangeable click jaws



Optional workholding technology: Compensating jaws and direct form-fit imprinting with the MasterGrip inserts